

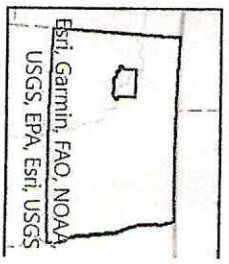
Fort Berthold
State, Federal
BIA

Roads With
Spills

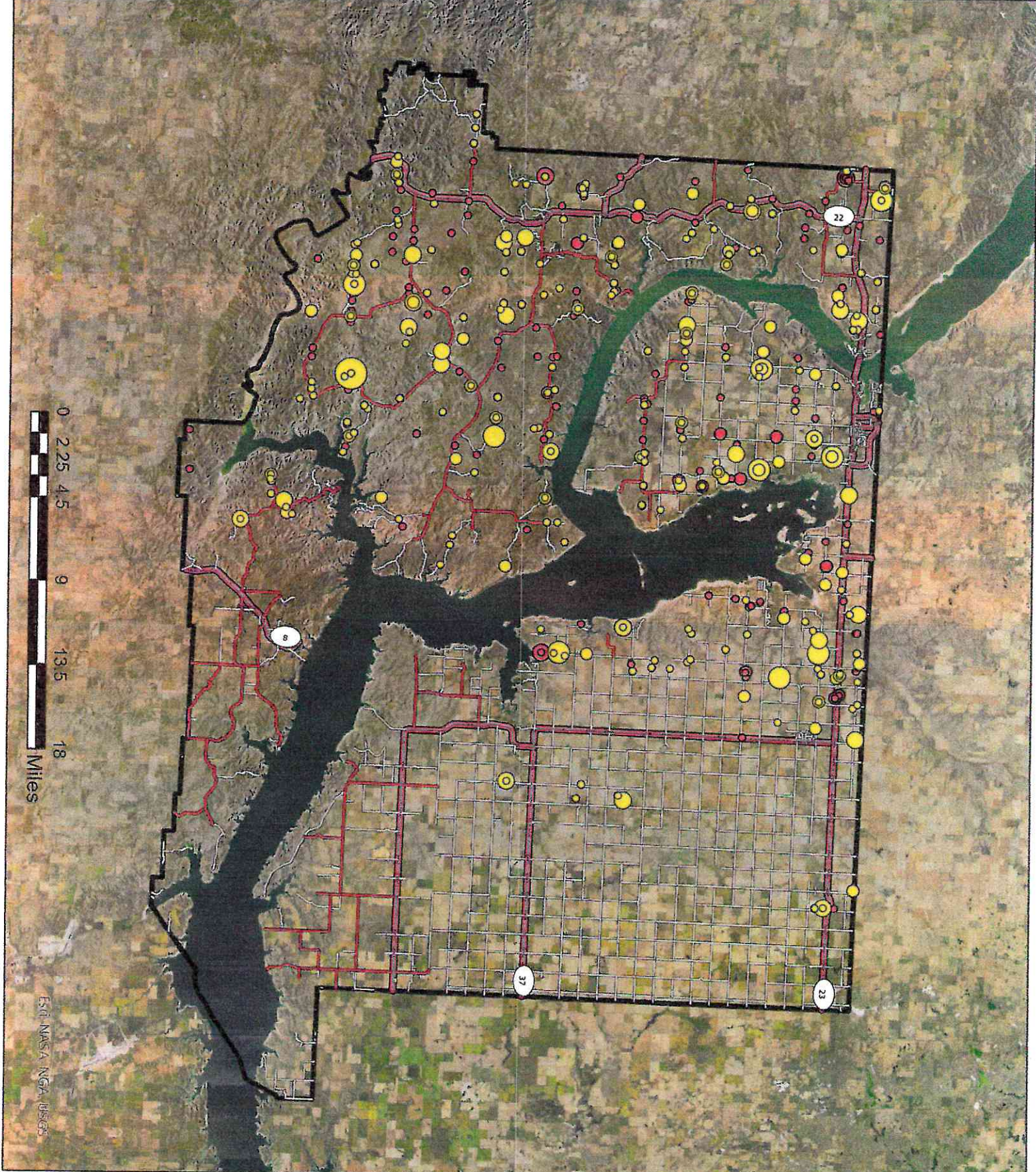
2010-2021



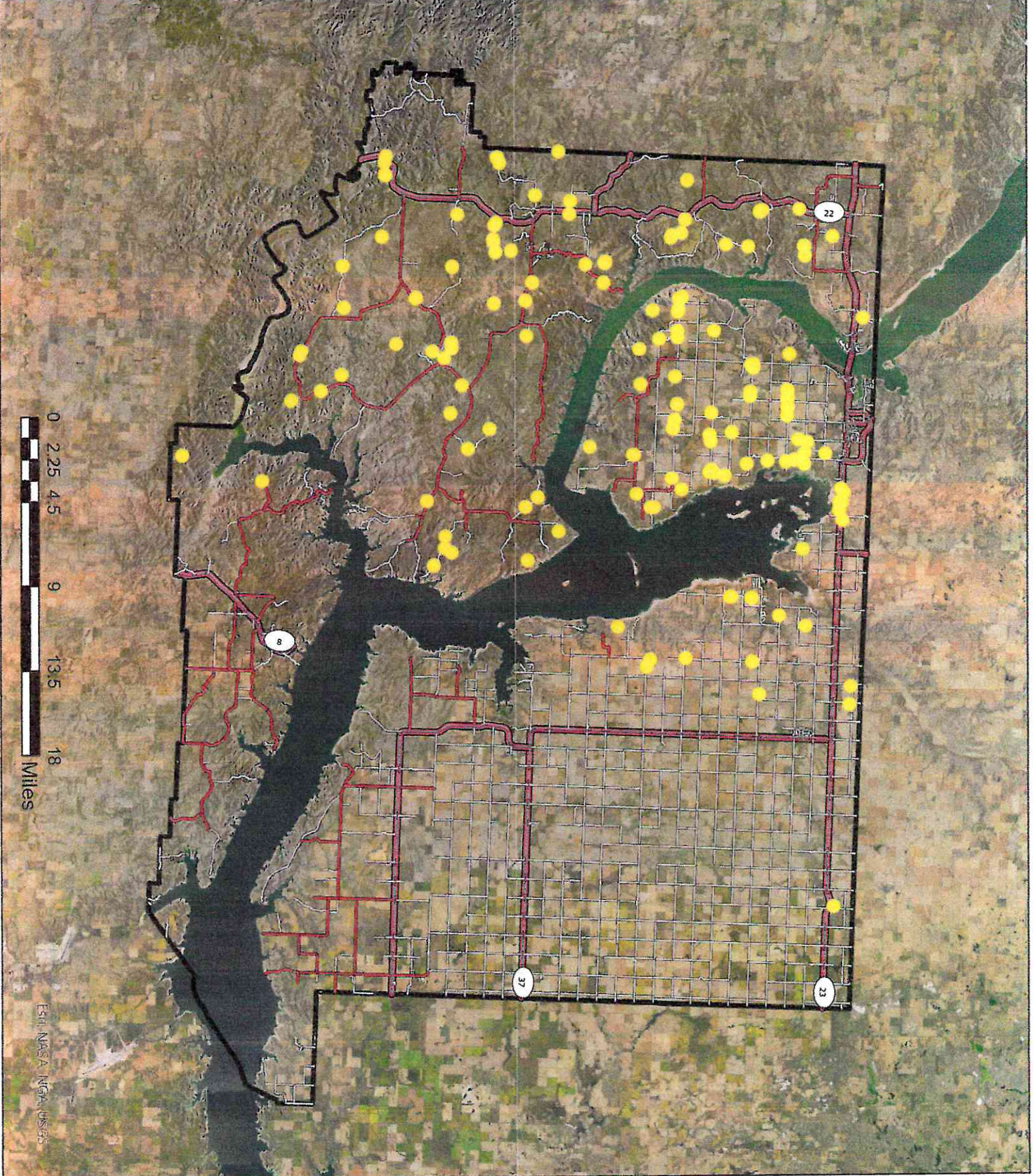
- BIA Roads
- Roads
- State/Federal Roads
- Reservation Boundary
- Red dots
- Oil spills
- Yellow dots
- Brine spill



This map (or data product) is for assessment and planning purposes only. It is not intended to be used for description, conveyance, authoritative definition of legal boundary, or property title. This is not a survey product. Users are encouraged to examine the documentation or metadata associated with the data on which this map is based for information related to its accuracy, completeness, and limitations.



Esti, MAS, NGA, USGS

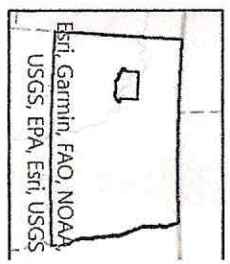


Fort Berthold
State, Federal
BIA
Roads With
Spills
2021-Current



- BIA Roads
- Roads
- State/Federal roads
- Reservation Boundary
- 2021-Current Spills

Brinje Spills





Erit, Garmin, FAO, NOAA,
USGS, EPA, Erit, USGS

This map (or data product) is for assessment and planning purposes only. It is not intended to be used for description, conveyance, authoritative definition of legal boundary, or property title. This is not a survey product. Users are encouraged to examine the documentation or metadata associated with the data on which this maps is based for information related to its accuracy, currency, and limitations.



Legend

 Oil Spill 100ft

 FEDERAL STATE ROADS

Oil Spill within 100ft of HWY 37 (Year 2023)
 -No spills have occurred within 100ft in the years after



Miles

Considerable effort has been made to ensure the accuracy, correctness and timeliness of data presented; however, this information is only as accurate as its sources and may not reflect the most current information. The Three Affiliated Tribes assumes no liability for any errors, omissions or inaccuracies and makes no warranty, representation or guaranty of any kind, express or implied, as to the content or for any decisions made or actions taken or not taken by the user based upon any information provided with the data.



20



ESRI, AECOM, and the U.S. Army Corps of Engineers are trademarks of their respective owners. All other trademarks are the property of their respective owners. © 2023